

# Captain Segull's Sportfishing Chart

## OFFSHORE

### Cape May, NJ to Cape Hatteras, NC

PLEASE REFER TO CAPTAIN SEGULL'S OFFSHORE, NEARSHORE, INSHORE AND SMALL BOAT/KAYAK CHARTS AT [www.captainsegullcharts.com](http://www.captainsegullcharts.com) OR VISIT YOUR NEAREST MARINE STORE

Mercator Projection  
North American Datum of 1983  
(World Geodetic System 1984)  
SOUNDINGS IN FATHOMS  
AT MEAN LOWER LOW WATER

Additional information can be obtained at [www.nauticalcharts.noaa.gov](http://www.nauticalcharts.noaa.gov)

(For offshore navigation only)

HEIGHTS  
Heights in feet above Mean High Water

Bottom characteristics:  
Bld boulders Co coral bk hulk Oys oysters so soft Sh shells sticky  
Ck broken clay G gravel Gr grass Rk rock sand S mud

- Ocean City Reefs**  
82' O.C. Fish Center 38° 18.317'/74° 53.727'  
82' CG MSA Diver 38° 18.312'/74° 53.726'  
O.C. MSA, Harrison Group 38° 17.983'/74° 53.479'  
38° 17.974'/74° 53.801'  
Bass Grounds East Reef 38° 16.832'/74° 53.472'  
Contact Ocean City Reef Foundation  
[www.ocreefoundation.com](http://www.ocreefoundation.com)

- Black Fish Banks Artificial Reef**  
Tanks  
37° 50.132'/75° 15.217'  
37° 50.139'/75° 15.182'  
37° 50.374'/75° 14.871'  
37° 50.251'/75° 14.716'  
37° 50.107'/75° 14.871'

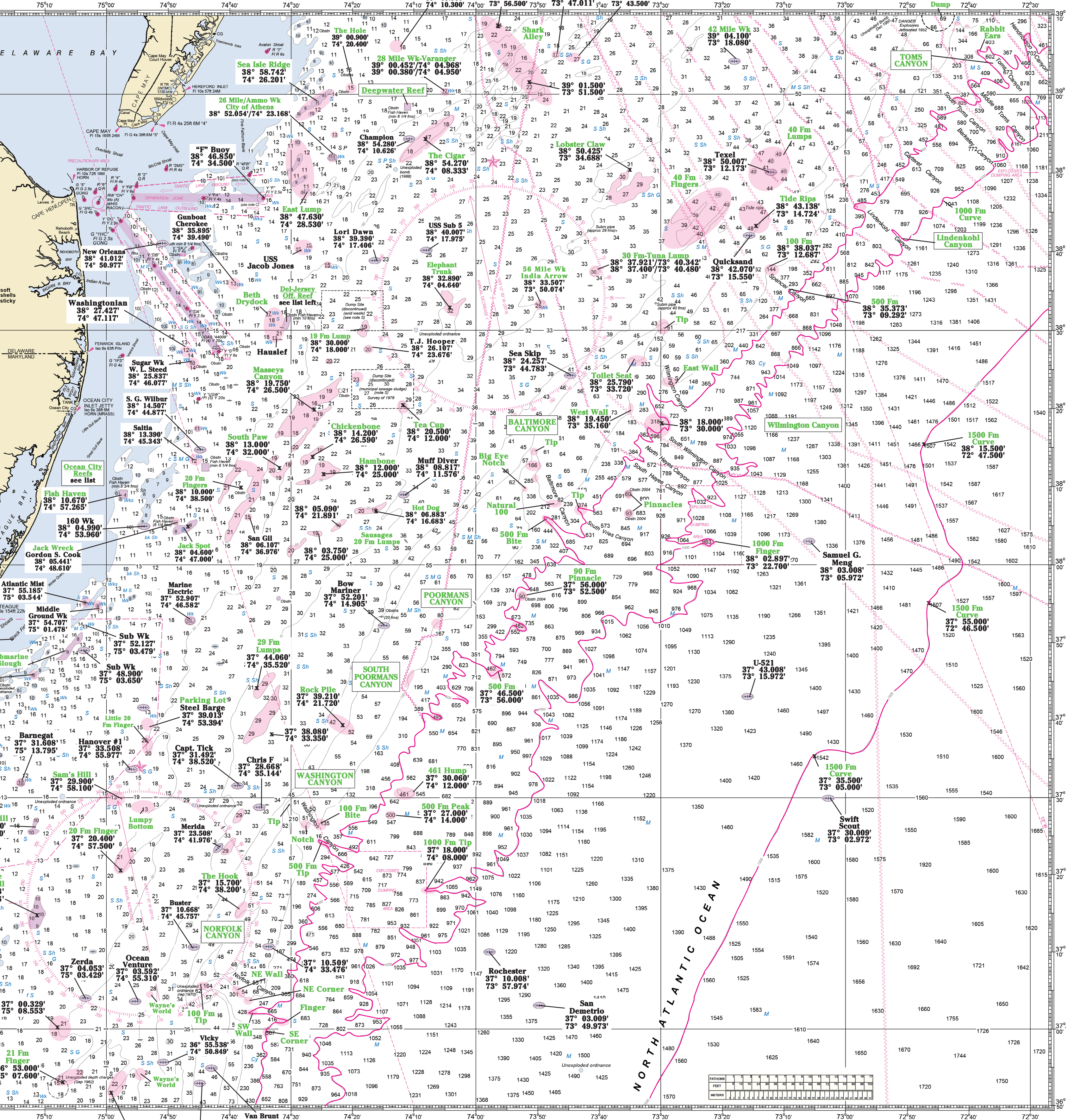
- Sub Wreck**  
37° 52.067'/75° 03.443'  
USS Bone 37° 45.765'/75° 11.829'  
Parking Lot 37° 41.600'/74° 54.000'  
LS Page 37° 32.000'/74° 53.900'  
LS Mona Isle 37° 31.830'/75° 26.420'  
CG Barge 37° 32.680'/75° 26.300'  
9 3/4 Fm Wk 37° 31.645'/75° 25.621'  
Wachapreague Reef Concrete Pipe 37° 33.030'/75° 32.410'  
Concrete Igloos 37° 32.500'/75° 32.870'

- Triangle Reef**  
36° 59.630'/75° 21.550'  
John Morgan 37° 00.094'/75° 24.498'  
USNS Webster 36° 59.689'/75° 21.680'  
USNS Garrison 36° 59.594'/75° 21.782'  
Haviland 36° 59.459'/75° 21.820'  
Lillian Luckenbach 36° 58.576'/75° 25.061'

- USS Jacob Jones - DD130 Area**  
38° 40.202'/74° 28.683'  
38° 39.607'/74° 26.576'  
Beth Drydock #5 Area 38° 31.057'/74° 31.576'  
Hauslef; Moonstone 38° 29.146'/74° 32.666'  
Del-Jersey Offshore Reef Subway Cars 38° 31.600'/74° 30.400'  
185' Atlantic Mist 38° 31.066'/74° 30.266'  
563' US Radford 38° 30.850'/74° 30.650'  
175' Gregory Poole 38° 30.916'/74° 30.602'

- Sub Wreck**  
37° 52.067'/75° 03.443'  
USS Bone 37° 45.765'/75° 11.829'  
Parking Lot 37° 41.600'/74° 54.000'  
LS Page 37° 32.000'/74° 53.900'  
LS Mona Isle 37° 31.830'/75° 26.420'  
CG Barge 37° 32.680'/75° 26.300'  
9 3/4 Fm Wk 37° 31.645'/75° 25.621'  
Wachapreague Reef Concrete Pipe 37° 33.030'/75° 32.410'  
Concrete Igloos 37° 32.500'/75° 32.870'

- Triangle Reef**  
36° 59.630'/75° 21.550'  
John Morgan 37° 00.094'/75° 24.498'  
USNS Webster 36° 59.689'/75° 21.680'  
USNS Garrison 36° 59.594'/75° 21.782'  
Haviland 36° 59.459'/75° 21.820'  
Lillian Luckenbach 36° 58.576'/75° 25.061'



CANYON COORDINATES ARE LISTED ON RIGHT SIDE OF CHART

**SOUNDINGS IN FATHOMS**  
at Mean Lower Low Water.  
Heights  
Heights in feet above Mean High Water  
Mercator Projection  
North American Datum of 1983  
(World Geodetic System 1984)  
**(ONE FATHOM = SIX FEET)**

**Symbol Identification**  
= Wreck  
= Most Important  
Fishing Areas

**One Nautical Mile (NM) = 6,076 Feet**  
**One Minute of Latitude**  
Measure One Nautical Mile on the East/West Latitude Sides of Chart  
All coordinates on this Chart are Degrees & Minutes (DD.MM.MMM)

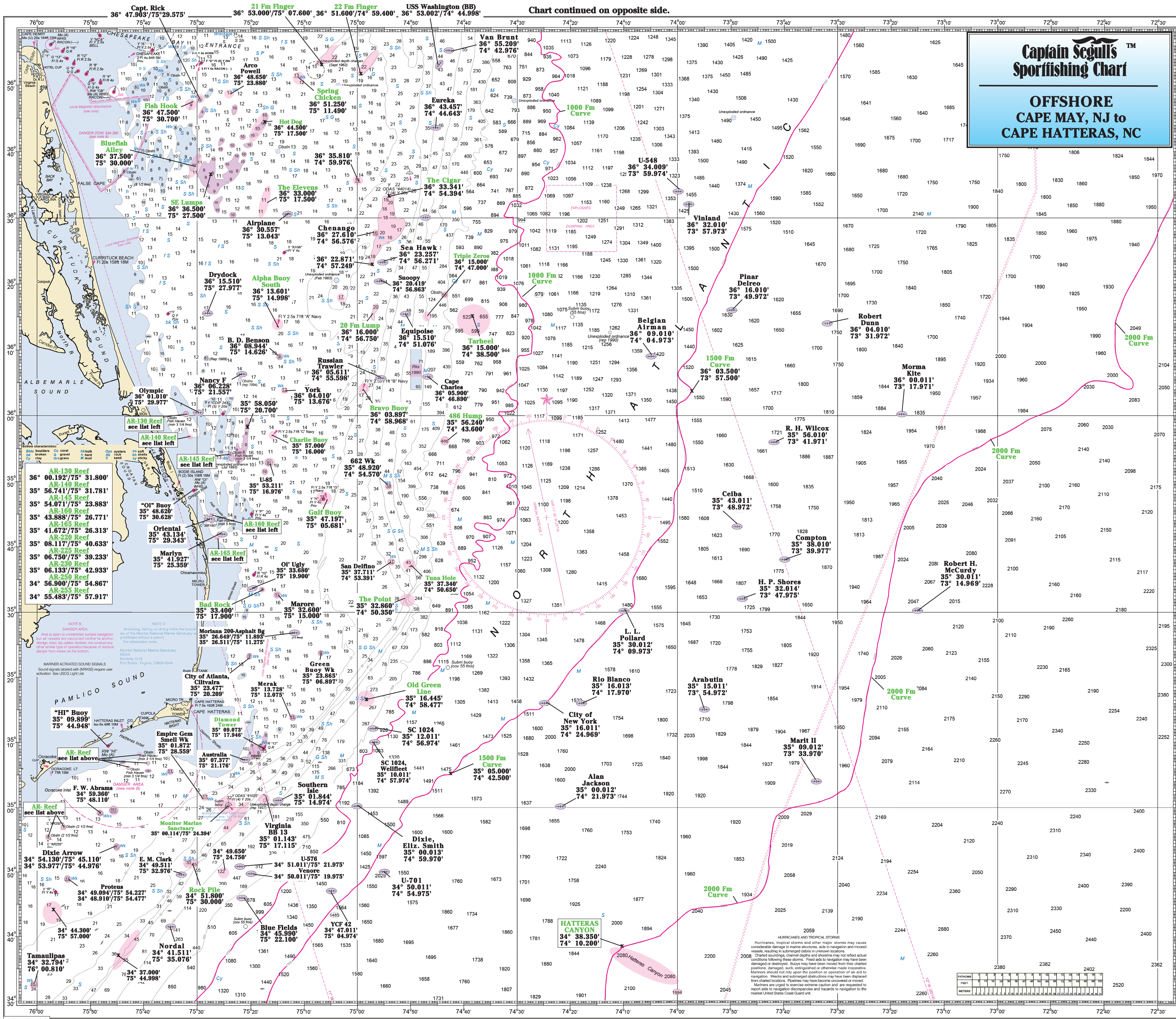
- CANYON COORDINATES HENDRICKSON CANYON**  
East Wall 39° 05.750'/72° 29.500'  
TOMS CANYON  
The Dump - 39° 09.980'/72° 45.075'  
The Hook - 39° 09.260'/72° 42.067'  
The Point - 39° 09.130'/72° 41.702'  
North Bend - 39° 09.740'/72° 41.618'  
East Bend - 39° 08.865'/72° 39.735'  
Valley - 39° 07.180'/72° 40.915'  
Rabbit Ears East - 39° 06.325'/72° 36.502'  
Rabbit Ears West - 39° 05.865'/72° 38.215'  
The Deep - 39° 05.190'/72° 36.475'  
1000 Fm Tip - 38° 59.500'/72° 30.500'
- MIDDLE TOMS**  
1000 Fm Tip 38° 55.500'/72° 33.500'  
**SOUTH TOMS CANYON**  
500 Fm Tip - 38° 59.500'/72° 42.000'  
1000 Fm Tip - 38° 54.000'/72° 35.000'  
**BERKELEY CANYON**  
500 Fm Tip - 38° 57.500'/72° 46.000'  
**CARTERET CANYON**  
100 Fm Drop - 38° 54.617'/72° 54.406'  
500 Fm Tip - 38° 53.000'/72° 49.750'  
47 Fm Hole East - 38° 53.826'/73° 06.969'  
47 Fm Hole West - 38° 57.030'/73° 14.725'  
48 Fm Hole - 38° 53.388'/73° 13.545'  
40 Fm Lumps - 38° 51.322'/73° 10.763'
- 40 Fm Fingers**  
38° 47.000'/73° 20.608'  
38° 46.151'/73° 18.628'  
38° 44.000'/73° 25.000'  
38° 43.669'/73° 20.155'  
38° 43.068'/73° 27.059'
- LINDENKOH CANYON**  
100 Fathom - 38° 49.230'/73° 01.825'  
NW Slot - 38° 49.255'/73° 02.612'  
The NE Drop - 38° 49.453'/73° 59.155'
- WILMINGTON CANYON**  
Tip - 38° 29.913'/73° 29.462'  
Alligator Bite - 38° 25.536'/73° 30.597'  
East Wall - 38° 23.050'/73° 28.900'
- BALTIMORE CANYON**  
The Tip - 38° 14.544'/73° 50.648'  
166 Hump - 38° 12.850'/73° 50.467'  
Big Eye Notch/The Bump 38° 09.696'/73° 52.134'  
38° 09.667'/73° 51.867'  
East Wall - 38° 11.050'/73° 50.420'  
38° 11.003'/73° 50.700'
- Natural 100 - 38° 07.880'/73° 46.167'**  
Bend of the Canyon 38° 07.751'/73° 46.820'  
500 Fm Bite - 38° 05.817'/73° 48.567'  
Alligator Bite - 38° 05.745'/73° 48.360'
- SOUTH VRIES CANYON**  
The Tip - 38° 07.283'/73° 45.567'  
500 Fm Curve - 38° 07.100'/73° 43.220'
- Pinnacles**  
60 Fm - 38° 09.100'/73° 35.480'  
93 Fm - 38° 06.600'/73° 35.200'
- Deepwater Reef**  
Rail Cars - 38° 58.930'/74° 11.240'  
38° 58.580'/74° 10.640'  
38° 58.340'/74° 10.630'  
38° 58.140'/74° 10.710'  
bassbarn.com - 38° 58.688'/74° 11.410'  
Walt Hendee Reef 38° 58.385'/74° 11.429'  
**POORMANS CANYON**  
37° 52.400'/74° 06.500'  
100 Fm Bend - 37° 52.960'/74° 02.870'  
Tip - 37° 52.510'/74° 06.192'
- SOUTH POORMANS CANYON**  
37° 45.750'/74° 11.000'  
37° 44.630'/74° 10.707'  
Triple "0's" - 37° 44.850'/74° 10.960'  
500 Fm Finger 37° 42.333'/74° 01.217'  
37° 42.333'/74° 01.217'
- WASHINGTON CANYON**  
100 Fm Tip - 37° 28.707'/74° 30.566'  
100 Fm Bight - 37° 26.000'/74° 26.000'  
Notch - 37° 27.240'/74° 27.520'  
500 Fm Tip - 37° 24.030'/74° 25.440'
- NORFOLK CANYON**  
30 Fm Hump - 37° 04.000'/74° 50.400'  
100 Fm Tip - 37° 05.500'/74° 45.000'  
NE Wall - 37° 04.750'/74° 38.500'  
NE Corner - 37° 03.550'/74° 37.000'  
SW Wall - 37° 02.000'/74° 37.000'  
Finger - 37° 00.950'/74° 31.250'  
SE Corner - 37° 00.000'/74° 35.500'

SOUNDINGS IN FATHOMS

Chart continued on opposite side.







**Captain Segull's™  
Sportfishing Chart**

**OFFSHORE  
CAPE MAY, NJ to  
CAPE HATTERAS, NC**

**Attention:**  
This Chart provides approximate locations for sport fishing and is not intended for navigation. Even though this Chart is an exact reproduction of N.O.A.A. Chart #12200, please consult a current navigational chart for that purpose as well as consulting the Local Notice to Mariners and Light List regarding any changes. This Chart is meant for recreational use only. Captain Segull uses the most up to date information available. However, we assume no liability whatsoever, directly or indirectly, arising from errors or omissions.  
**WARNING:** All Lat/Long positions are approximate locations. Latitude and Longitude positions on this Chart were taken by direct computation, the Local Notice to Mariners and the USCG Light List. Mariners should have up-to-date N.O.A.A. Charts and the Local Notice to Mariners for navigation. Chart #12200 has been corrected up to the time of publication.  
Please refer to Local Notice to Mariners Updates at:

[www.nauticalcharts.noaa.gov](http://www.nauticalcharts.noaa.gov)  
© Copyright 2021  
for Captain Segull's Nautical Charts, Inc.®  
No copyright claims are made to N.O.A.A. Chart 12200 per se.  
Unauthorized duplication is prohibited.  
For more information on  
Captain Segull's Nautical Charts, Inc.® please call toll free: 1-888-473-4855,  
or visit our Web Site:  
[www.captainsegullcharts.com](http://www.captainsegullcharts.com)

**SOUNDINGS IN FATHOMS  
at Mean Lower Low Water.  
Heights  
Heights in feet above Mean  
High Water.**

**Mercator Projection  
North American Datum of 1983  
(World Geodetic System 1984)  
ONE FATHOM = SIX FEET**

**Symbol Identification**

☉ = Wreck  
☉ = Most Important  
Fishing Areas

**ONE FATHOM = 6 FEET  
One Nautical Mile (NM) =  
6,076 Feet =  
One Minute of Latitude  
Measure One Nautical Mile on the  
East/West Latitude Sides of Chart  
All coordinates on this Chart  
are Degrees & Minutes  
(DD.MM.MMM)**

**SOUNDINGS IN  
FATHOMS**

PLEASE REFER TO CAPTAIN SEGULL'S  
OFFSHORE, NEARSHORE, INSHORE AND  
SMALL BOAT/KAYAK CHARTS AT  
[www.captainsegullcharts.com](http://www.captainsegullcharts.com) or  
VISIT YOUR NEAREST MARINE STORE

FATHOMS	
1	6
2	12
3	18
4	24
5	30
6	36
7	42
8	48
9	54
10	60
11	66
12	72
13	78
14	84
15	90
16	96
17	102
18	108
19	114
20	120
21	126
22	132
23	138
24	144
25	150
26	156
27	162
28	168
29	174
30	180
31	186
32	192
33	198
34	204
35	210
36	216
37	222
38	228
39	234
40	240
41	246
42	252
43	258
44	264
45	270
46	276
47	282
48	288
49	294
50	300

6 53210 10298 1