




Some Canyon and Offshore Coordinates on this Chart were taken from:
Captain John N. Raguso
 MarCeeJay Sport Fishing, LLC
 www.marceejay.com
 and Al Conti of Snug Harbor Marina,
 Wakefield, RI
 401-763-7766

SOUNDINGS IN FATHOMS
 at Mean Lower Low Water.
 Heights
 Heights in feet above Mean High Water.
 Mercator Projection
 North American Datum of 1983
 (World Geodetic System 1984)

Symbol Identification
 = Wreck
 = Most Important
 = Fishing Areas

One Nautical Mile (NM) = 6,076 Feet = One Minute of Latitude
 Measure One Nautical Mile on the East/West Latitude Sides of Chart
 All coordinates on this Chart are Degrees & Minutes (DD.MM.MMM)



#OFGPS18

#OFGPS18

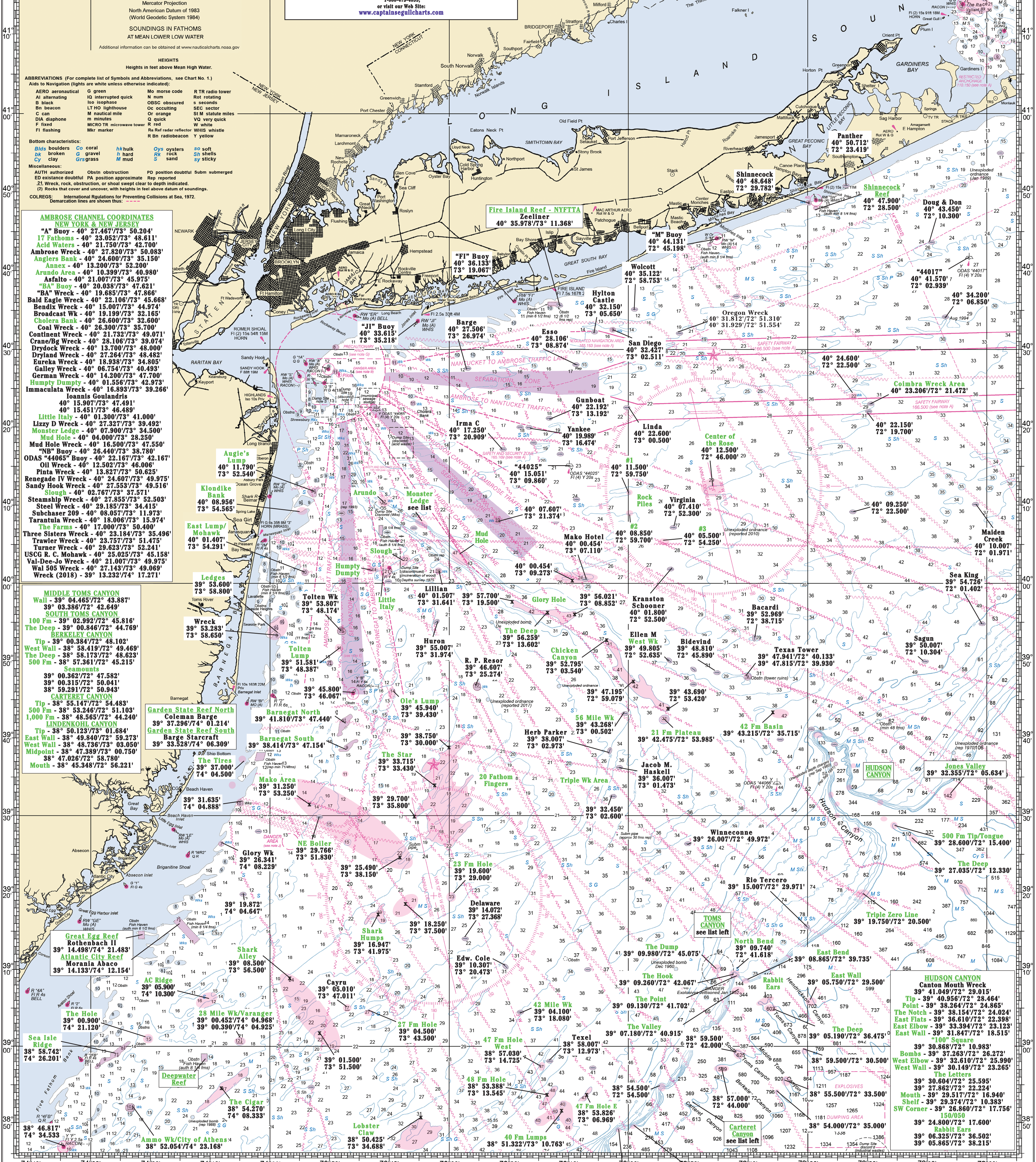
Captain Segull's Sportfishing Chart

OFFSHORE GPS NEW YORK & NEW JERSEY

Attention:
 This Chart provides approximate locations for sport fishing and is not intended for navigation. Even though this Chart is an exact reproduction of N.O.A.A. Chart #12390, please consult a current navigational chart for that purpose as well as consulting the Local Notice to Mariners and Light List regarding any changes. This Chart is meant for recreational use only. Captain Segull uses the most up to date information available. However, we assume no liability whatsoever, directly or indirectly, arising from errors or omissions.
 WARNING: All Lat/Long positions are approximate locations. Latitude and Longitude positions on this Chart were taken by direct computation, the Local Notice to Mariners and the USCG Light List. Mariners should have up-to-date N.O.A.A. Charts and the Local Notice to Mariners for navigation and should collect their own on site readings. Chart #12390 has been corrected up to the time of publication.
 Please refer to Local Notice to Mariners Update at:
 www.nauticalcharts.noaa.gov
 © Copyright 2021 for Captain Segull's Nautical Charts, Inc. ©
 No copyright claims are made to N.O.A.A. Chart #12390 per se.
 Unauthorized duplication is prohibited.
 For more information on Captain Segull's Nautical Charts, Inc. © please call toll free:
 1-888-473-4855
 or visit our Web Site:
 www.captainsegullcharts.com

Please refer to Captain Segull's Charts:
 Inshore charts -- #F1105, #N1106, #W1115, #N1109, #S1110, #M1104, #S1107, #J1113, #N1114
 Nearshore charts -- #N0Y59, #N0J19, #Bathymetric charts -- #BKL207, #AT206

ONE FATHOM = SIX FEET



- ABBREVIATIONS** (For complete list of Symbols and Abbreviations, see Chart No. 1)
 Aids to Navigation (lights are white unless otherwise indicated):
 AERO aeronautical G green Mo Morse code R RTR radio tower
 A alternating I interrupted quick N num Rot rotating
 B black L light house O obscured S seconds
 Bn beacon LT light tower SEC sector SEC sector
 C can M nautical mile Or orange S M statute miles
 DIA diaphone F fixed Q quick VQ very quick
 F flashing MICRO TR microwave tower R red VQ very quick
 F flashing Mkr marker Ref Ref radar reflector WHS whistle
 R Bn radiobeacon Y yellow
- Bottom characteristics:**
 Bld broken G coral hkhk hks oysters s soft
 bk broken g gravel h hard Sh shells
 C clay Grs grass M mud
- Miscellaneous:**
 AUTH authorized Obstr obstruction PD position doubtful Subm submerged
 ED existence doubtful PA position approximate Rep reported
 W1 wreck, rock obstruction, or shoal swept clear to depth indicated.
 (2) Rocks that cover and uncover, with heights in feet above datum of soundings.
COLREGS: International Rules of Preventing Collisions at Sea, 1972.
 Demarcation lines are shown thus:

- AMBROSE CHANNEL COORDINATES**
 NEW YORK & NEW JERSEY
 "A" Buoy - 40° 27.487/73° 50.204'
 17 Fathoms - 40° 23.052/73° 48.611'
 Acid Waters - 40° 21.750/73° 42.700'
 Ambrose Wreck - 40° 27.820/73° 50.083'
 Anglers Bank - 40° 24.600/73° 35.150'
 Annex - 40° 13.200/73° 32.200'
 Arundo Area - 40° 19.399/73° 40.980'
 Asfalto - 40° 21.007/73° 45.975'
 "BA" Buoy - 40° 20.038/73° 47.621'
 "BA" Wreck - 40° 19.685/73° 47.866'
 Bald Eagle Wreck - 40° 22.106/73° 45.668'
 Bendix Wreck - 40° 15.007/73° 44.974'
 Broadcast Wk - 40° 19.199/73° 48.432'
 Cholera Bank - 40° 26.600/73° 32.600'
 Coal Wreck - 40° 26.300/73° 35.700'
 Continent Wreck - 40° 21.732/73° 49.071'
 Crane/Dog Wreck - 40° 28.106/73° 39.074'
 Dryland Wreck - 40° 13.700/73° 48.000'
 Dryland Wreck - 40° 17.364/73° 48.185'
 Eureka Wreck - 40° 18.938/73° 34.805'
 Galley Wreck - 40° 06.754/73° 40.493'
 German Wreck - 40° 14.200/73° 47.700'
 Humpty Dumpty - 40° 01.556/73° 42.973'
 Immaculata Wreck - 40° 16.893/73° 39.266'
 40° 15.907/73° 47.491'
 40° 15.451/73° 46.489'
 Little Italy - 40° 01.300/73° 41.000'
 Lizzy D Wreck - 40° 27.327/73° 39.492'
 Monster Wreck - 40° 07.900/73° 34.500'
 Mud Hole - 40° 04.000/73° 28.250'
 Mud Hole Wreck - 40° 16.500/73° 47.550'
 "NB" Buoy - 40° 26.440/73° 38.780'
 ODAS "44065" Buoy - 40° 22.167/73° 42.167'
 Oil Wreck - 40° 12.502/73° 46.006'
 Pinta Wreck - 40° 13.827/73° 50.625'
 Renegade W Wreck - 40° 24.697/73° 49.975'
 Sandy Hook Wreck - 40° 27.553/73° 49.916'
 Slough - 40° 02.767/73° 37.571'
 Steamship Wreck - 40° 27.855/73° 52.503'
 Steel Wreck - 40° 29.185/73° 34.415'
 Subchaser 209 - 40° 08.057/73° 11.973'
 Tarentula Wreck - 40° 18.000/73° 45.974'
 The Farms - 40° 17.000/73° 50.400'
 Three Sisters Wreck - 40° 23.184/73° 35.496'
 Trawler Wreck - 40° 23.757/73° 51.475'
 Turner Wreck - 40° 28.623/73° 52.241'
 USCG R. C. Mohawk - 40° 25.025/73° 45.158'
 Val-De-Jo Wreck - 40° 21.007/73° 49.975'
 Wal 505 Wreck - 40° 27.143/73° 49.069'
 Wreck (2018) - 39° 13.232/74° 17.271'

- MIDDLE TOMS CANYON**
 Wall - 39° 04.465/72° 43.887'
 39° 03.386/72° 42.649'
SOUTH TOMS CANYON
 100 Fm - 39° 02.992/72° 45.816'
 The Deep - 39° 00.846/72° 44.769'
BEKLEY CANYON
 Tip - 39° 00.384/72° 48.102'
 West Wall - 38° 58.419/72° 49.469'
 The Deep - 38° 58.173/72° 48.623'
 500 Fm - 38° 57.361/72° 45.215'
SEAMOUNTS
 39° 00.629/72° 7.582'
 39° 00.315/72° 50.041'
 38° 59.291/72° 50.943'
CARTERET CANYON
 Tip - 38° 55.147/72° 54.483'
 500 Fm - 38° 53.246/72° 51.103'
 1,000 Fm - 38° 49.565/72° 44.240'
LINDENKOHLE CANYON
 Tip - 38° 50.123/73° 01.684'
 East Wall - 38° 49.840/72° 59.273'
 West Wall - 38° 48.736/73° 03.050'
 Midpoint - 38° 47.889/73° 00.750'
 Mouth - 38° 45.348/72° 56.221'

- GARDEN STATE REEF NORTH**
 Coleman Barge 39° 37.296/74° 01.214'
GARDEN STATE REEF SOUTH
 Barge Starcraft 39° 33.528/74° 06.309'
BARNEGAT NORTH
 39° 41.810/73° 47.440'
BARNEGAT SOUTH
 39° 38.414/73° 47.154'
Mako Area
 39° 31.250/73° 53.250'
NE Boiler
 39° 29.766/73° 31.830'
Shark Alley
 39° 05.010/73° 47.011'
28 Mile Wk/Varanger
 39° 00.452/74° 04.968'
 39° 00.390/74° 04.925'
27 Fm Hole
 38° 50.425/73° 34.688'
47 Fm Hole
 38° 50.030/73° 14.725'
48 Fm Hole
 38° 53.388/73° 18.080'
47 Fm Hole E
 38° 53.826/73° 06.969'
40 Fm Lumps
 38° 51.322/73° 10.763'

#OFGPS18

#OFGPS18

SOUNDINGS IN FATHOMS

Please refer to Captain Segull's Offshore Cape May, NJ to Cape Hatteras, NC Chart -- #CMH20

Captain Segull's Sportfishing Chart

OFFSHORE GPS MASSACHUSETTS & RHODE ISLAND

Attention:
This Chart provides approximate locations for sport fishing and is not intended for navigation. Even though this chart is an exact reproduction of N.O.A.A. Chart #12300, please consult a current navigational chart for that purpose as well as consulting the Local Notice to Mariners and Light List regarding any changes. This Chart is meant for recreational use only. Captain Segull uses the most up to date information available. However, we assume no liability whatsoever, directly or indirectly, arising from errors or omissions in this chart.
WARNING: Mariners should have up-to-date N.O.A.A. Charts and the Local Notice to Mariners for navigation and should collect their own on-site readings. Chart #12300 has been corrected up to the time of publication.
Please refer to Local Notice to Mariners Updates at: www.nauticalcharts.noaa.gov
© Copyright 2021 for Captain Segull's Nautical Charts, Inc.®
No copyright claims are made to N.O.A.A. Chart #12300 per se.
Unauthorized duplication is prohibited.
For more information on Captain Segull's Nautical Charts, Inc.®, please call toll free: 1-888-473-4855, or visit our Web Site: www.captainsegullcharts.com

SOUNDINGS IN FATHOMS
at Mean Lower Low Water.
Heights
in feet above Mean High Water.
Mercator Projection
North American Datum of 1983
(World Geodetic System 1984)
One Nautical Mile (NM) = 6,076 Feet = One Minute of Latitude
All coordinates on this Chart are Degrees & Minutes (DD.MM.MMM)

Please refer to Captain Segull's Charts Nearshore and Inshore Charts:
#MVN116, #SCC103, #BB14, #NB104, #PJ13, #FIO10, #FO10
Bathymetric Charts: #CRM208, #AT206
Some Canyon and Offshore Coordinates on this Chart were taken from:
Captain John N. Raguso
MarCeeJay Sport Fishing, LLC
www.marceejay.com
and Al Conti of Snug Harbor Marina, Wakefield, RI 401-783-7766



Symbol Identification
= Wreck
= Most Important
Fishing Areas

#0FGPS18 #0FGPS18

